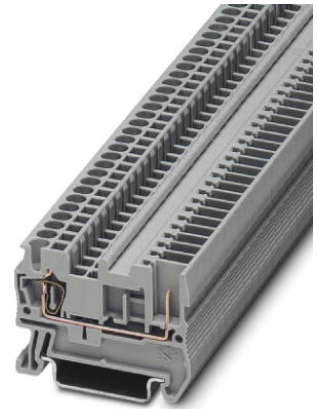


ST 2,5/ 1P

Order No.: 3040012

<http://eshop.phoenixcontact.de/phoenix/treeViewClick.do?UID=3040012>

Pluggable spring-cage terminal block for mounting on NS 35

Commercial data

EAN	4017918832612
Pack	50 Pcs.
Customs tariff	85369010
Weight/Piece	0.005725 KG
Catalog page information	Page 202 (CL-2007)

Product notesWEEE/RoHS-compliant since:
01/01/2003

<http://www.download.phoenixcontact.com>
Please note that the data given here has been taken from the online catalog. For comprehensive information and data, please refer to the user documentation. The General Terms and Conditions of Use apply to Internet downloads.

Technical data**General**

Number of levels	1
Number of connections	2
Color	gray
Insulating material	PA
Inflammability class acc. to UL 94	V0

Dimensions

Width	5.2 mm
Length	48.5 mm
Height NS 35/7,5	36.5 mm
Height NS 35/15	44 mm

Technical data

Maximum load current	24 A (For 4 mm ² conductor cross section, see derating curve)
Rated surge voltage	6 kV
Pollution degree	3
Surge voltage category	III
Insulating material group	I
Connection in acc. with standard	IEC 61 984
Nominal current I _N	24 A (see derating curve)
Nominal voltage U _N	500 V
Open side panel	ja

Connection data

Conductor cross section solid min.	0.08 mm ²
Conductor cross section solid max.	4 mm ²
Conductor cross section stranded min.	0.08 mm ²
Conductor cross section stranded max.	2.5 mm ²
Conductor cross section AWG/kcmil min.	28
Conductor cross section AWG/kcmil max	12
Conductor cross section stranded, with ferrule without plastic sleeve min.	0.25 mm ²
Conductor cross section stranded, with ferrule without plastic sleeve max.	2.5 mm ²
Conductor cross section stranded, with ferrule with plastic sleeve min.	0.25 mm ²
Conductor cross section stranded, with ferrule with plastic sleeve max.	2.5 mm ²
2 conductors with same cross section, stranded, TWIN ferrules with plastic sleeve, max.	0.5 mm ²
Type of connection	Special and hybrid connection
Stripping length	10 mm
Internal cylindrical gage	A3

Certificates / Approvals



CUL

Nominal voltage U_N	600 V
Nominal current I_N	20 A
AWG/kcmil	24-12

UL

Nominal voltage U_N	600 V
Nominal current I_N	20 A
AWG/kcmil	24-12
Certification	BV, CB, CUL, DNV, GL, GOST, LR, UL, VDE-PZI

Accessories

Item	Designation	Description
------	-------------	-------------

Assembly

3030721	ATP-ST 4	Partition plate, for visual and electrical separation of terminal groups, width: 2 mm, color: gray
3030417	D-ST 2,5	Cover, width: 2.2 mm, length: 48.5 mm, color: Gray

Bridges

3030161	FBS 2-5	Plug-in bridge for cross-connections in the terminal center, 2-pos., color: Red
3030174	FBS 3-5	Plug-in bridge for cross-connections in the terminal center, 3-pos., color: Red
3030187	FBS 4-5	Plug-in bridge for cross-connections in the terminal center, 4-pos., color: Red
3030190	FBS 5-5	Plug-in bridge for cross-connections in the terminal center, 5-pos., color: Red
3030213	FBS 10-5	Plug-in bridge for cross-connections in the terminal center, 10-pos., color: Red
3030226	FBS 20-5	Plug-in bridge for cross-connections in the terminal center, 20-pos., color: Red
3038930	FBS 50-5	Plug-in bridge for cross-connections in the terminal center, 50-pos., color: Red

Marking

3040588	PC	Coding for all basic terminal blocks
0800190	ZB 5 /VT-100:UNBEDRUCKT	Zack strip, unprinted: 10-section, for individual labeling with M-PEN, ZB-T or CMS system, large batch, sufficient for labeling 1000 terminal blocks, color: violet
1050004	ZB 5 :UNBEDRUCKT	Zack strip, unprinted, 10-section, for individual labeling with M-PEN, ZB-T or CMS system, pack is sufficient for 100 terminal blocks, for a terminal width of 5.2 mm, color: White
1050127	ZB 5,LGS:1-9	Zack strip, printed horizontally: 9-section, with the numbers 1 - 9, color: white
1050017	ZB 5,LGS:FORTL.ZAHLEN	Zack strip, 10-section, printed horizontally: with the numbers, 1-10, 11-20 etc. up to 991-1000, color: white
1050033	ZB 5,LGS:GLEICHE ZAHLEN	Zack marker strip, labeled horizontally: 10-section, with identical numbers, 1/1/1, 2/2/2 etc. up to 500/500/500, color: white
1050415	ZB 5,LGS:L1-N,PE	Zack strip, printed horizontally, strips with 10 labels, L1, L2, L3, N, PE, L1, L2, L3, N, PE, color: white
1050020	ZB 5,QR:FORTL.ZAHLEN	Zack strip, 10-section, printed vertically: with consecutive numbers, 1-10, 11-20 a.s.o. up to 991-1000, color: white
5061536	ZB 5/BU-100:UNBEDRUCKT	Zack strip, unprinted: 10-section, for individual labeling with M-PEN, ZB-T or CMS system, large batch, sufficient for labeling 1000 terminal blocks, color: blue
5061497	ZB 5/GN-100:UNBEDRUCKT	Zack strip, unprinted: 10-section, for individual labeling with M-PEN, ZB-T or CMS system, large batch, sufficient for labeling 1000 terminal blocks, color: green
1050211	ZB 5/OG,LGS: 10-100	Zack strip, printed horizontally: 10-section, with the numbers 10/20/30-100, (for decade labeling), color: orange
1053179	ZB 5/OG-100:UNBEDRUCKT	Zack strip, unprinted: 10-section, for individual labeling with M-PEN, ZB-T or CMS system, large batch, sufficient for labeling 1000 terminal blocks, color: orange
5061471	ZB 5/RD-100:UNBEDRUCKT	Zack strip, unprinted: 10-section, for individual labeling with M-PEN, ZB-T or CMS system, large batch, sufficient for labeling 1000 terminal blocks, color: red
5060906	ZB 5/WH-100:UNBEDRUCKT	Zack strip, unprinted: 10-section, for individual labeling with M-PEN, ZB-T or CMS system, large batch, sufficient for labeling 1000 terminal blocks, for a terminal width of 5.2 mm, color: White
5061510	ZB 5/YE-100:UNBEDRUCKT	Zack strip, unprinted: 10-section, for individual labeling with M-PEN, ZB-T or CMS system, large batch, sufficient for labeling 1000 terminal blocks, color: yellow
1050295	ZB 5:SO/CMS	Zack strip, 10-section, divisible, special printing, marking according to customer requirements
0807180	ZBFM 5/OG:UNBEDRUCKT	Zack marker sheet, flat, unprinted: 120-section, 10 strips à 12 markers, sufficient for 120 terminal blocks, for all terminal blocks, pitch 5.2 mm, labeling with M-PEN or CMS system, color: orange
0803595	ZBFM 5/WH:UNBEDRUCKT	Zack marker sheet, flat, unprinted: 120-section, 10 strips à 12 markers, sufficient for 120 terminal blocks, for all terminal blocks, pitch 5.2 mm, labeling with M-PEN or CMS system, color: white

0803647	ZBFM 5:SO/CMS	Special printing, Zack marker sheet, flat, 120-section, divisible, marking according to customer requirements
---------	---------------	---

Plug/Adapter

3002843	ISH 2,5/0,2	Insulation stop sleeve, color: White
3002856	ISH 2,5/0,5	Insulation stop sleeve, color: gray
3002869	ISH 2,5/1,0	Insulation stop sleeve, color: black
3030925	PAI-4	Test adapter, for 4 mm diameter test plug PS and safety test plug, makes contact in the bridge shaft
3030983	PS-5	Modular test plug, for individual assembly of test plug strips, for UT, ST, DT and QT terminal blocks, can be labeled with ZBF 5, color: Red

Tools

1204517	SZF 1-0,6X3,5	Screwdriver, blade: 0.6 x 3.5 x 100 mm, length 180 mm
---------	---------------	---

Additional products

Item	Designation	Description
Plug/Adapter		
3040258	SP 2,5/ 1	ST-COMBI connector, not bridgeable
3040698	SP 2,5/ 1 BU	ST-COMBI connector, not bridgeable
3040708	SP 2,5/ 1 GNYE	ST-COMBI connector, not bridgeable
3040261	SP 2,5/ 2	ST-COMBI connector, not bridgeable
3040274	SP 2,5/ 3	ST-COMBI connector, not bridgeable
3040287	SP 2,5/ 4	ST-COMBI connector, not bridgeable
3040290	SP 2,5/ 5	ST-COMBI connector, not bridgeable
3040300	SP 2,5/ 6	ST-COMBI connector, not bridgeable
3040313	SP 2,5/ 7	ST-COMBI connector, not bridgeable
3040326	SP 2,5/ 8	ST-COMBI connector, not bridgeable
3040339	SP 2,5/ 9	ST-COMBI connector, not bridgeable
3040342	SP 2,5/10	ST-COMBI connector, not bridgeable
3040355	SP 2,5/11	ST-COMBI connector, not bridgeable
3040368	SP 2,5/12	ST-COMBI connector, not bridgeable
3040371	SP 2,5/13	ST-COMBI connector, not bridgeable
3040384	SP 2,5/14	ST-COMBI connector, not bridgeable
3040397	SP 2,5/15	ST-COMBI connector, not bridgeable
3040106	SPB 2,5/ 1	ST-COMBI connector, bridgeable

3040724	SPB 2,5/ 1 BU	ST-COMBI connector, bridgeable
3040711	SPB 2,5/ 1 GNYE	ST-COMBI connector, bridgeable
3040119	SPB 2,5/ 2	ST-COMBI connector, bridgeable
3040122	SPB 2,5/ 3	ST-COMBI connector, bridgeable
3040135	SPB 2,5/ 4	ST-COMBI connector, bridgeable
3040143	SPB 2,5/ 5	ST-COMBI connector, bridgeable
3040151	SPB 2,5/ 6	ST-COMBI connector, bridgeable
3040164	SPB 2,5/ 7	ST-COMBI connector, bridgeable
3040177	SPB 2,5/ 8	ST-COMBI connector, bridgeable
3040180	SPB 2,5/ 9	ST-COMBI connector, bridgeable
3040193	SPB 2,5/10	ST-COMBI connector, bridgeable
3040203	SPB 2,5/11	ST-COMBI connector, bridgeable
3040216	SPB 2,5/12	ST-COMBI connector, bridgeable
3040229	SPB 2,5/13	ST-COMBI connector, bridgeable
3040232	SPB 2,5/14	ST-COMBI connector, bridgeable
3040245	SPB 2,5/15	ST-COMBI connector, bridgeable
3040407	SPDB 2,5/ 1	ST-COMBI connector, double, bridgeable
3040737	SPDB 2,5/ 1 BU	ST-COMBI connector, double, bridgeable
3040740	SPDB 2,5/ 1 GNYE	ST-COMBI connector, double, bridgeable
3040410	SPDB 2,5/ 2	ST-COMBI connector, double, bridgeable
3040423	SPDB 2,5/ 3	ST-COMBI connector, double, bridgeable
3040436	SPDB 2,5/ 4	ST-COMBI connector, double, bridgeable
3040449	SPDB 2,5/ 5	ST-COMBI connector, double, bridgeable
3040452	SPDB 2,5/ 6	ST-COMBI connector, double, bridgeable
3040465	SPDB 2,5/ 7	ST-COMBI connector, double, bridgeable
3040478	SPDB 2,5/ 8	ST-COMBI connector, double, bridgeable
3040481	SPDB 2,5/ 9	ST-COMBI connector, double, bridgeable
3040494	SPDB 2,5/10	ST-COMBI connector, double, bridgeable
3040504	SPDB 2,5/11	ST-COMBI connector, double, bridgeable
3040517	SPDB 2,5/12	ST-COMBI connector, double, bridgeable
3040520	SPDB 2,5/13	ST-COMBI connector, double, bridgeable
3040533	SPDB 2,5/14	ST-COMBI connector, double, bridgeable
3040546	SPDB 2,5/15	ST-COMBI connector, double, bridgeable

Drawings

Dimensioned drawing

